



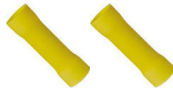



TAG Hardtop Light

INSTALLATION INSTRUCTIONS

Part#: 69690 & 69691

PARTS/TOOLS NEEDED:

					
Hardtop Light	Decorative Bezel	Mounting Screws	Hole Saw Bits (not provided)	Butt Splice Connectors (not provided)	Power Drill (not provided)

IMPORTANT SAFETY INSTRUCTIONS. READ CAREFULLY FOR YOUR PROTECTION AND SAVE ALL INSTRUCTIONS.

- Disconnect power before installing, adding or changing any component.
- To avoid a hazard to children, account for all parts and destroy all packing materials.
- It is recommended that fuse protection be added to the positive (+) input.
- The TAG lights utilize a glass lens, so care should be taken when installing not to crack or chip the lens.
- Note, the screw mount light cannot be removed once installed.

TTP OPERATING INSTRUCTIONS

Dimming

- The lights will start at a minimum brightness and increase to full brightness over five seconds. Turn the switch (not provided) off and back on within the five seconds to keep the light at that brightness level.

Color Selection (not applicable to single color lights)

- Turn power off then on again to switch to the next color.

To Reset Color or Brightness

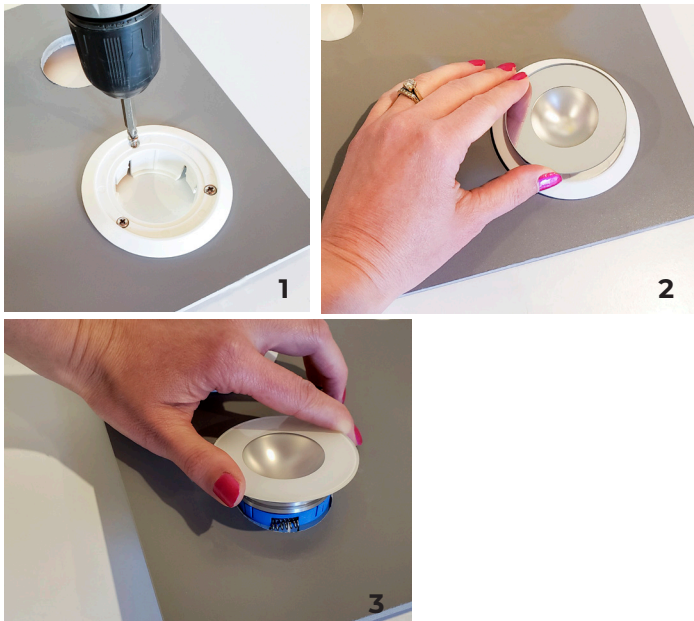
- Turn power to the lights off for a minimum of 12 seconds, then on again.

1. Determine the installation location for your light and drill a hole*.

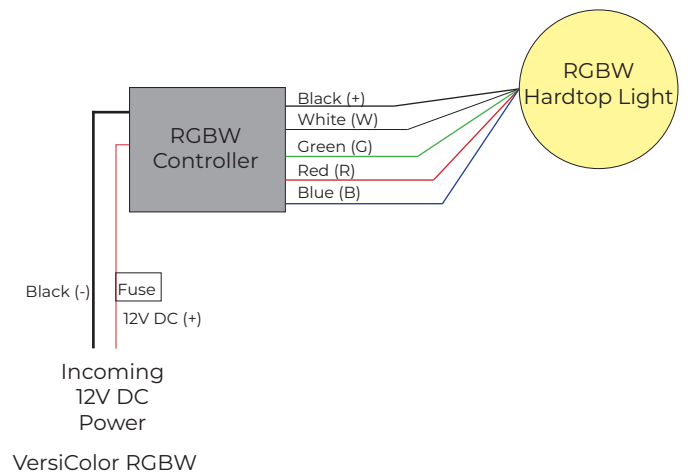
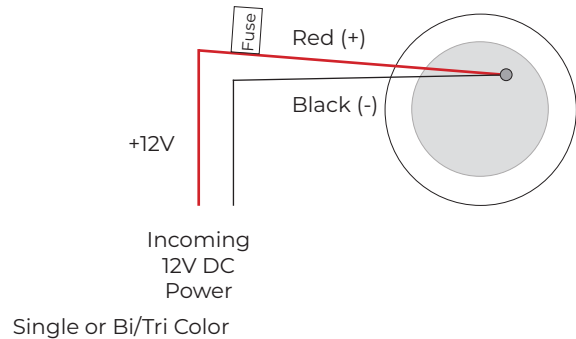
Screw Mount Version: Using the bezel as a template, mark the screw holes and pre-drill. Screw in the bezel¹ using provided screws. Push light into bezel² until it snaps in place.

Spring Mount Version: Bend back springs and install light³.

Size	Mounting	Hole Size*
2"	Spring	1 1/2"
	Screw	1 1/16"
2.75"	Spring	2"
	Screw	2 1/8"



2. Wire the light following the wiring diagrams below.



3030 Corporate Grove Dr.
Hudsonville, MI 49426
Phone: 616.396.1355
itc-us.com

For warranty information please visit www.itc-us.com/warranty-return-policy
DOC #: 710-00168 · Rev A · 09/24/20